

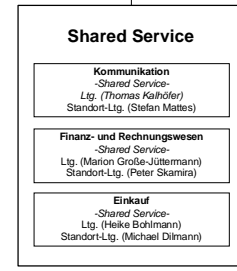
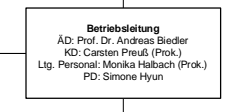
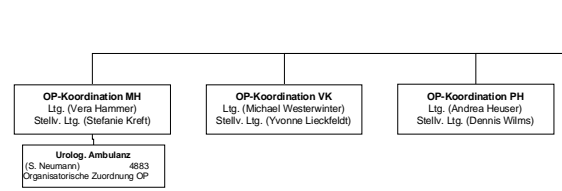
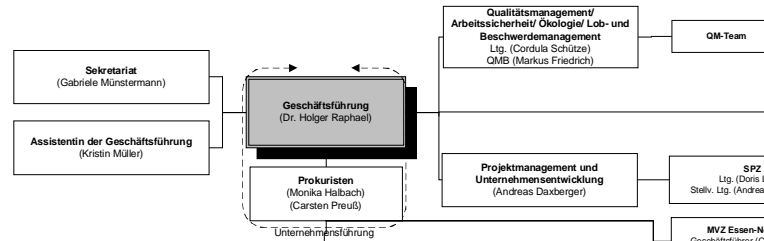
gemeinsame Aufbauorganisation

Katholisches Klinikum Essen GmbH

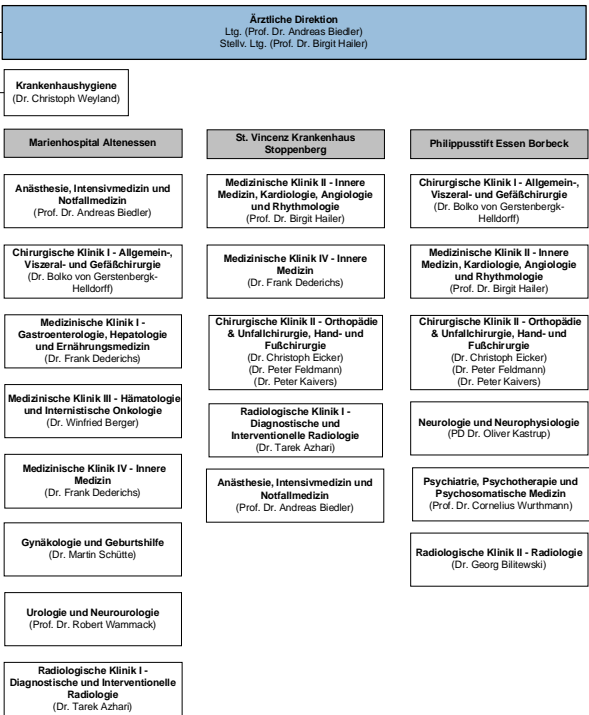
Marienhospital
St. Vincenz Krankenhaus
Philippusstift

Gültig ab: 01.12.2018

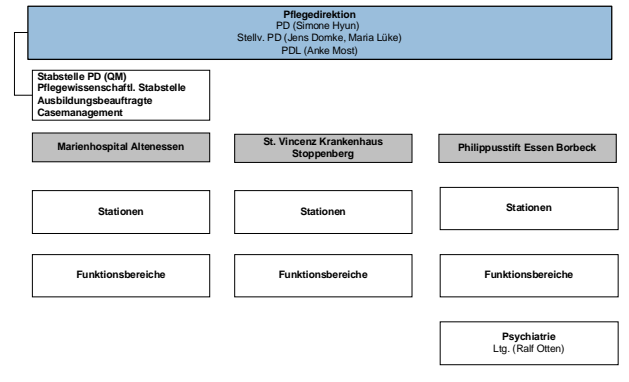
Katholisches Klinikum
Essen GmbH



Ärztliche Versorgung



Pflegerische Versorgung



Zentrale Dienste

